

August 2020



# A ROADMAP TO REOPENING SCHOOLS

## OUR COMMITMENTS FOR THE 2020-21 SCHOOL YEAR

### 1. PROVIDE A SAFE ENVIRONMENT FOR STUDENTS, STAFF, AND VISITORS

We are committed to following the guidance of Washington State Department of Health and Chelan-Douglas Health District on when it is safe to have students on site and what precautions need to be in place in order to do so safely. Social distancing, hand hygiene, mask and shield wearing, enhanced cleaning, and keeping students in cohorts are key components of the plan. Furthermore, we will be limiting the number of students in a classroom/instructional space. We are also committed to being “fluid and flexible” in our delivery systems so we are able to respond quickly when health conditions change in our area or if/when individuals or groups of students must learn remotely.

### 2. LISTEN TO OUR FAMILIES

We are committed to providing choices to meet the different needs of families. If we must do remote learning, we will provide technology to support students and parents. We want to help parents help their children, and that includes classes for parents on supporting learning at home. We will also offer more teacher-led “live” instruction and increased teacher-parent communication.

### 3. PROVIDE EFFECTIVE INSTRUCTION AND MEANINGFUL FEEDBACK THAT IS SIMPLE AND PREDICTABLE FOR STUDENTS TO PARTICIPATE IN

We are committed to providing opportunities for connection with and support from your teacher, as well as a predictable schedule using a combination of real-time instruction and recorded instruction. We will use Google Meet for video streaming, and Google Classroom for learning management, both are free Google Apps. There will be similar learning expectations and grading practices as normal school operation even while learning remotely.

### 4. PROVIDE EQUITABLE ACCESS TO EDUCATION FOR ALL STUDENTS

Regardless of access to technology, language barriers, transitional housing, access to supervision, disabilities, mental health, and physical health and safety, we are committed to providing the best education possible to all Eastmont students. Eastmont will provide a Chromebook to any student who requests one. We will provide internet hotspots to those who have need. We will provide our most vulnerable students additional support, including being the first to receive instruction and support on site.

### 1. PROPORCIONAR UN AMBIENTE SEGURO PARA LOS ESTUDIANTES, EL PERSONAL Y LOS VISITANTES.

Siguiendo las instrucciones del departamento de salud del estado de Washington y el distrito de salud de Chelan-Douglas para saber cuándo es seguro tener estudiantes en las escuelas y qué precauciones deben tomarse. Praccando distanciamiento social, higiene de manos, uso de cubrebocas / careta, aumentar la limpieza, y mantener a los estudiantes en grupos. Limitando el número de estudiantes en un salón o espacio de instrucción. Ser “flexibles y variables” en nuestros sistemas de entrega para poder responder rápidamente cuando las condiciones de salud cambien en nuestra área o si / cuando individuos o grupos de estudiantes deben aprender de forma remota.

### 2. ESCUCHAR A NUESTRAS FAMILIAS

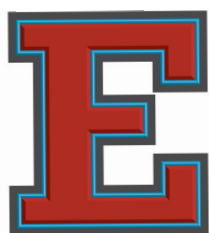
Brindar opciones para satisfacer las diferentes necesidades de las familias. Si debemos hacer aprendizaje en línea: Proporcionar apoyo tecnológico a estudiantes y padres. Ayudar a los padres a que puedan “ayudar” a sus hijos. Clases para padres sobre cómo apoyar el aprendizaje en casa. Más instrucción dirigida por el maestro “en vivo.” Comunicación mejorada entre padres y maestros.

### 3. BRINDAR INSTRUCCIÓN EFECTIVA Y COMENTARIOS SIGNIFICATIVOS QUE SEAN SIMPLES Y PREDECIBLES PARA QUE LOS ESTUDIANTES PARTICIPEN EN:

Oportunidades consistentes para mantener comunicación y recibir apoyo de su maestro. Horario predecible. Combinación de instrucción en vivo e instrucción grabada. Una plataforma para la transmisión de video (Google Meet) y otra para la gestión de aprendizaje (Google Classroom). Expectativas de aprendizaje y prácticas de calificación similares a las de la operación escolar normal, incluso cuando tengan clases en línea.

### 4. PROPORCIONAR ACCESO A LA EDUCACIÓN PARA TODOS LOS ESTUDIANTES:

Independientemente del acceso a la tecnología, las barreras del idioma, el estatus migratorio, la vivienda de transición, el acceso a la supervisión, la discapacidad, la salud mental, la salud y seguridad sica. Asignar una tableta a cualquier estudiante que lo solicite. Proporcionar puntos de acceso a Internet a quienes lo necesiten. Brindar apoyo adicional a nuestros estudiantes más vulnerables, incluso ser el primero en recibir instrucción y apoyo en el sitio.



**EASTMONT SCHOOL DISTRICT**  
*Relationships, Relevance, Rigor, Results*

Eastmont School District  
800 Eastmont Ave.  
East Wenatchee, WA 98802

NON PROFIT  
U.S. Postage  
**PAID**  
Wenatchee, WA  
98801  
Permit Number 241  
ECRWSS

Postal Customer

Eastmont School District does not discriminate in any programs or activities on the basis of sex, race, creed, religion, color, national origin, age, veteran or military status, sexual orientation, gender expression or identity, disability, or the use of a trained dog guide or service animal and provides equal access to the Boy Scouts and other designated youth groups. Inquiries regarding compliance and/or grievance procedures may be directed to the school district's coordinators for Title IX/RCW 28A.642, Section 504, or the ADA. The District does not tolerate sexual harassment, harassment, intimidation, or bullying. Report this conduct to principals, administrators, or Vicki Trainor.

Civil Rights Coordinator, Title IX / 28A.640 RCW Officer and ADA Coordinator  
Vicki Trainor  
Executive Director of Human Resources  
Eastmont School District  
800 Eastmont Ave.  
East Wenatchee, WA 98802  
509.884.7169

Section 504 Coordinator  
Matt Charlton, Assistant Superintendent/Secondary Education  
Spencer Taylor, Executive Director of Elementary Education  
Eastmont School District  
800 Eastmont Ave.  
East Wenatchee, WA 98802  
509.884.7169



# Outstanding Migrant Students and Parents Honored



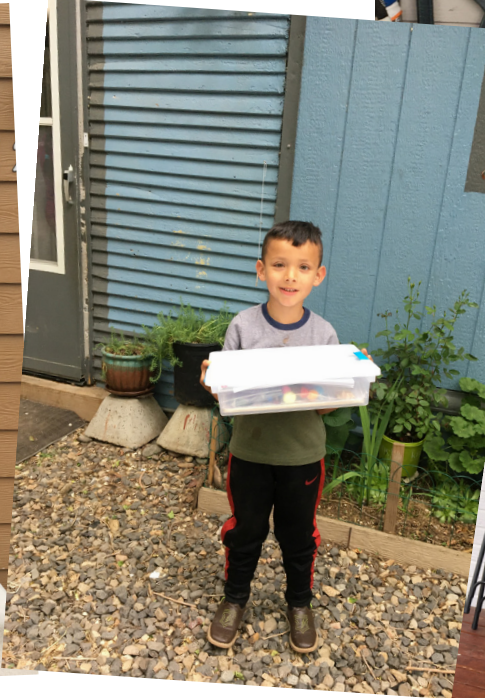
We are happy to recognize our Migrant Students' of the Year and Parents' of the Year! This year due to COVID 19 we were challenged in not being able to recognize our parents at our yearly Migrant Recognition PAC meeting. Consequently, our team delivered awards in person via home visits to each recipient. This year our very own Migrant PAC Vice President Ricardo Valdovinos was awarded for his effort and support to our district's Migrant Goal: Work to identify the needs of our Migrant Students, Parents & Community while ensuring that we provide the best resources possible.



# Keeping Young Minds Busy with Active Learning Bins



In partnership with Miss Mari's Preschool, we provided 20 Kinder Readiness Kits to incoming Migrant Kindergarten students. The home visits took place the last week of school and included sharing Kinder registration packets. The families were very excited to receive the kits and shared pictures with our team.



Scan the code with your smart device to learn more about Miss Mari's Preschool!





# Safety During A Pandemic: What We’re Doing

By GARN CHRISTENSEN

A brief review of pandemics indicates these have been part of history. Some have proved dangerous to all ages, yet others primarily affected children, men, women, or our older citizens. This one appears to be a challenge for most who get it, and especially lethal to our older seniors and those with additional health issues. The success of this virus is evident in the speed and thoroughness that it has spread around the globe and to very remote regions.

As always, in Eastmont we will be balancing the safety and educational needs of students with community health priorities. Weekly, we consult with our local health department and determine when and how to expand our educational services. A quick visit to our District webpage at [www.eastmont206.org/updates](http://www.eastmont206.org/updates) will indicate which services and activities are on-campus, those that are scheduled to come on campus, and those that continue online or remotely.

Please know all campuses are closed until further notice to all visitors other than parents/guardians or to those with a scheduled appointment. We also caution our grandparents and older residents to consider not attending any events as we start to open up. Instead, ask if the school has the ability to video stream the event or perhaps a family member can record the event.

## RECONFIGURATION AND ATTENDANCE AREA REVISIONS

Transitioning to K-6 schools and two junior high schools continues to be on schedule for implementation in the 2021-22 school year. The goals of this process are as follows:

- Maximize use of available K-12 classrooms at all levels over the next 10-15 years.
- Maximize State and Federal funding at all schools.
- Maximize neighborhood walking schools.
- Maximize bus route efficiencies.

Even though we hope to minimize student disruption, approximately 25% of elementary students will be reassigned to an adjacent school given two additional grades (5th and 6th) are being added to each elementary school. These assignments will be made after the Board takes final action next winter on recommended school attendance areas. All students will need to reapply as a choice student if they desire to attend a school outside of their new attendance area. These are evaluated based upon space available. For more information on reconfiguration including a timeline for implementation, please go to our District website at [www.eastmont206.org](http://www.eastmont206.org) and select **Departments** from the drop-down menu, and then **Construction**, and then the **“Reconfiguration”** tab on the right. Please direct any questions to Executive Director of Elementary Education Spencer Taylor at [taylor@s@eastmont206.org](mailto:taylor@s@eastmont206.org) or call 509.884.7169.

## Eastmont Financial Update and Outlook

By GARN CHRISTENSEN

As we emerge from this and return to a new normal, I remind our community that we need your help to ensure we return every tax dollar possible back to our community. This is more important than ever as many of our residents are without jobs or income. Working to return tax dollars is an on-going task assigned to Eastmont supervisors as they manage federal, state, and local allocations and prepare and submit applications for competitive grants.

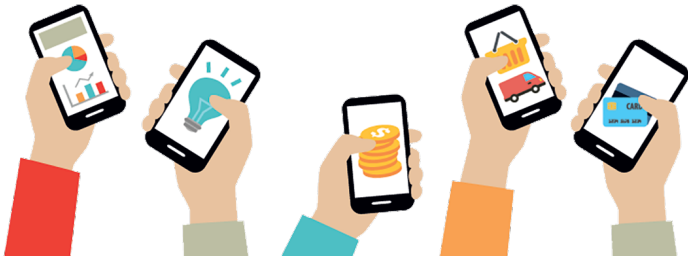
For our community, we ask that you help us with a few activities. First, if you have students at any age in Eastmont, consider filling out the application for free or reduced meals. Even if you decide not to participate, the information from this application drives funds for our meal program, yet also several instructional programs that hire teachers, paraeducators, and other support staff to provide additional and enrichment type services.

Normally, with construction and congestion around our schools, we would encourage more students to ride our

buses. This reduces traffic, saves you time and gas money, and according to accident statistics is safer for children than riding in a car to and from school. Yet with the pandemic and challenges of social distancing on buses, we ask that you have your student walk or bike if the school is within a reasonable distance and there is a safe walking route, or drive your student to and from school if your schedule allows. Bus routes and times will be posted once we resume on-campus instruction.

Last, on an upcoming November election ballot there will be a proposal for our Replacement Educational Programs and Operations (EP&O) Levy. These funds are local property taxes that remain 100% in Eastmont. The funds help pay for staffing costs throughout the District as well as support sports, arts, drama, choir, and other electives and specialist programs. The rates approved by our Board of Directors at their July 13th meeting will renew the levy at rate consistent with what homeowners currently pay today.

## New Student Cell Phone Policy



Earlier this school year, the Eastmont Board committed to examine cell phone use in schools. As part of this process, we reviewed results from over 1,600 surveys from parents, students, employees, and community members. Based on this information, the Board approved Policy 3245, Students and Telecommunication Devices for implementation in 2020-21. The policy restricts cell phone use to emergency and before and after school use at the younger grades, and then expands responsible use as students get older. The update can be viewed on the District’s website under the About drop-down and the School Board tab.

INFORMACIÓN SOBRE EL SERVICIO DE ALIMENTOS PARA EL BOLETÍN  
INFORMATIVO DEL DISTRITO DE AGOSTO DE 2020

Cuentas de  
comidas para  
estudiantes

Para ayudar a garantizar la salud y seguridad de todos nuestros estudiantes y personal, los pagos en efectivo y con cheques para las cuentas de comidas de los estudiantes solo se aceptarán en la Oficina de Administración de Eastmont. Puede realizar los pagos en persona entre las 7:30 am y las 4:30 pm o por correo a 800 Eastmont Avenue, East Wenatchee WA 98802. No se aceptará efectivo ni cheques en las escuelas.

Alternativamente, los padres pueden realizar pagos seguros en línea a través de MySchoolBucks. Además, esta aplicación permitirá a los padres ver las compras de la cafetería, verificar el saldo de la cuenta de comidas de su estudiante, configurar alertas de saldo bajo y programar pagos automáticos.

MySchool Bucks

El Distrito Escolar de Eastmont se complace en anunciar una nueva asociación con MySchoolBucks, una forma segura para que los padres realicen pagos en línea a las cuentas de la cafetería de sus estudiantes, así como establecer alertas de saldo bajo y revisar el historial de compras de sus estudiantes. Los padres pueden crear una cuenta gratuita simplemente visitando el sitio web del distrito en [www.eastmont206.org](http://www.eastmont206.org) y navegando a la página “Servicios de alimentos” en “Departamentos y programas”. Haga clic en el enlace junto al icono “MySchoolBucks”.

Los saldos de la cuenta de comidas adeudados del año escolar 2019-20 se han transferido a la cuenta de multa de la escuela del estudiante. Estos saldos se pueden pagar en la oficina de la escuela del estudiante

Solicite comidas gratis / reducidas

Todos los hogares deben completar una nueva solicitud gratuita / reducida cada año escolar, independientemente de si una familia calificó para el año escolar anterior. Los estudiantes que recibieron beneficios gratuitos o de precio reducido durante el último año escolar continuarán recibiendo el mismo beneficio solo hasta mediados de octubre, o cuando se haya procesado una solicitud actualizada, lo que ocurra primero.

Nos complace anunciar una nueva herramienta en línea para enviar estas solicitudes. MySchoolApps permitirá a las familias solicitar de manera segura comidas gratis / reducidas desde un teléfono o computadora. Las familias registradas recibirán información sobre cómo utilizar esta nueva herramienta a través del servicio de mensajería de ParentSquare a principios de agosto. También puede encontrar información sobre este nuevo recurso en la página web del Departamento de Servicios de Alimentos en [www.eastmont206.org](http://www.eastmont206.org)

Consejos para completar la solicitud gratuita/reducida

- 1. Asegúrese de que toda la información del estudiante esté completa, incluida la sección de ingresos del estudiante. Por favor ponga \$ 0 si no hay ingresos del estudiante para reportar.
- 2. Asegúrese de proporcionar el nombre y los ingresos de todas las personas que viven en su hogar, incluso si no asisten a la escuela o tienen ingresos.
- 3. Asegúrese de firmar su solicitud en la parte inferior.

No seguir estos consejos puede resultar en una solicitud incompleta y puede resultar en una aprobación retrasada para su estudiante. Recibirá una carta aprobando o negando su solicitud.

Los estudiantes deberán pagar el precio completo de todas las comidas mientras se procesa la solicitud. Por favor asegúrese de enviar dinero con su estudiante para las comidas o un almuerzo para que coman hasta que haya recibido su notificación.

Escuelas de provisión de elegibilidad comunitaria  
La Escuela Primaria Rock Island continuará ofreciendo este programa. Esto significa que el desayuno y el almuerzo se sirven a todos los estudiantes inscritos sin costo alguno.

Precios de las comidas 2020-21  
los precios de las comidas no han cambiado con respecto al año escolar 2020-21

Desayuno Precio Completo Grados K-7	\$1.50
Desayuno Precio Completo Grados 8-12	\$1.75
Desayuno a precio reducido todos los grados sin cargo	sin cargo
Almuerzo Precio completo Grados K-7	\$2.75
Almuerzo Precio completo Grados 8-12	\$3.00
Almuerzo a precio reducido Grados K-3	sin cargo
Almuerzo a precio reducido Grados 4-12	\$0.40
Leche solo para todos los estudiantes	\$0.35

Política de cobro de comidas del distrito escolar de Eastmont

El Distrito Escolar de Eastmont reconoce que una nutrición adecuada es esencial para el crecimiento mental, físico y académico. Los padres son responsables de proporcionar sus hijos con las comidas, solicitando comidas gratuitas / a precio reducido cuando sea apropiado, o proporcionar dinero para que su hijo compre comidas.

Todos los niños que participan en los programas de comidas escolares del Distrito, ya sea gratis, a precio reducido

o tarifas pagadas, recibirá un desayuno y / o almuerzo reembolsable completo que cumpla los requisitos del USDA independientemente de si no tienen el dinero suficiente en la cuenta para cubrir el costo de la comida en el momento del servicio. Cada estudiante puede tener un Cuenta de cafetería en el punto de venta para administrar los cargos por comidas. Los padres pueden ver el saldo de la cuenta de servicio de alimentos en cualquier momento mediante el uso

de este punto de software de ventas. El acceso a este software está disponible en el Departamento de Servicio de Alimentos página web en [www.eastmont206.org](http://www.eastmont206.org).

Si bien la cuenta negativa es responsabilidad del padre / tutor del niño, bajo ninguna circunstancia se le negará una comida al niño debido a la falta de dinero o una saldo de la cuenta de alimentos. Al estudiante se le servirá una comida calificada. Los estudiantes no podrán cobrar compras a la carta.



FOOD SERVICE UPDATES

Student Meal Accounts

To help ensure the health and safety of all of our students and staff, cash and check payments for student meal accounts will only be accepted at the Eastmont Administration Office. You can make payments in person between 7:30 am and 4:30 pm or mail to 800 Eastmont Avenue, East Wenatchee WA 98802. No cash or checks will be accepted at school sites.

Alternatively, parents can make secure payments online via MySchoolBucks. In addition, this application will allow parents to view cafeteria purchases, check the balance of their student’s meal account, set up low balance alerts and schedule automatic payments.

MySchool Bucks

Eastmont School District is excited to announce a new partnership with MySchoolBucks, a safe and secure way for parents to make online payments to their student’s cafeteria accounts as well as set low balance alerts and review their student’s purchase history. Parents can create a free account simply by visiting the District’s website at [www.eastmont206.org](http://www.eastmont206.org) and navigating to the “Food Services” page under “Departments and Programs.” Click on the link next to the “MySchoolBucks” icon.

Meal account balances due from the 2019-20 school year have been transferred to the student’s school fine account. These fine balances can be paid at the student’s school office.

Community Eligibility Provision Schools

Rock Island Elementary School will continue to offer this program. This means that breakfast and lunch meals are served to all enrolled students at no cost.

Free Meal Applications

All households are required to fill out a new free/reduced application each school year, regardless of whether a family was qualified for the prior school year. Students who received free or reduced price benefits during the last school year will continue to receive the same benefit only until mid-October, or when an updated application has been processed, whichever happens first.

We are excited to announce a new on-line tool for submitting these applications. MySchoolApps will allow families to safely apply for free/reduced meals from a phone or computer. Registered families will receive information about how to use this new tool via the ParentSquare messaging service in early August. Information on this new resource can also be found on the Food Service Department web page at [www.eastmont206.org](http://www.eastmont206.org)

Tips for filling out the Free/Reduced Application

- 1. Make sure all student information is complete, including the student income section. Please put \$0 if there is no student income to report.
- 2. Make sure to provide the name and income of all people that live in your household, even if they do not attend school or have an income.
- 3. Make sure to sign your application at the bottom.

Not following these tips may result in an incomplete application and can result in delayed approval for your student. You will receive a letter either approving or denying your application. Students will need to pay full price for all meals while the application is being processed. Please make sure to send money with your student for meals or a sack lunch for them to eat until you have received your notification.

2020-21 Meal Prices

Meal prices are unchanged from the 2019-20 school year.

BREAKFAST FULL PRICE Grades K - 7	\$1.50
BREAKFAST FULL PRICE Grades 8 - 12	\$1.75
REDUCED PRICE BREAKFAST all grades	NO CHARGE
ELEMENTARY LUNCH FULL PRICE Grades K - 7	\$2.75
SECONDARY LUNCH FULL PRICE Grades 8 - 12	\$3.00
REDUCED PRICE LUNCH Grades K-3	NO CHARGE
REDUCED PRICE LUNCH Grades 4 - 12	\$0.40
MILK ONLY FOR ALL STUDENTS	\$0.35

Eastmont School District Meal Charge Policy

Eastmont School District recognizes that adequate nutrition is essential to a child’s mental, physical and academic growth. Parents are responsible for either providing their children with meals, applying for free /reduced price meals when appropriate, or providing money for their child to purchase meals. All children participating in the District’s school meal programs, whether at free, reduced or paid rates,

will receive a full reimbursable breakfast and/or lunch meal that meets USDA requirements regardless if they do not have adequate money in their student’s account to cover the cost of the meal at the time of service. Each student may have a point-of-sale cafeteria account to manage meal charges. Parents may view their child’s food service account balance at any time by utilizing this District provided online point of sales software. Access to

this software is available on the Food Service Department webpage at [www.eastmont206.org](http://www.eastmont206.org). While negative account is the responsibility of the child’s parent/guardian, under no circumstance will the child be denied a meal due to a lack of money or a negative food account balance. The student will be served a qualified meal. Students will not be allowed to charge à la carte purchases.

# Food Service Meal Pickup Schedules

## Eastmont Food Service

### Meal Pick Up Schedule

#### Beginning First Day of School

Lee Elementary - 11:00 am - 12:30 pm

Eastmont Jr High School - 11:30 am - 1:00 pm & 4:30 pm - 6:00 pm

Clovis - 11:30 am - 1:00 pm

Rock Island Elementary - 11:00 am - 12:30 pm

All bags will include breakfast and lunch. Meal Prices:

Students who qualify for free meals: No Charge

K-3 students who qualify for reduced price: No Charge

Grade 4-12 students who qualify for reduced price: \$4.25

Grade K-12 students without meal benefits: \$4.25

All students enrolled at Rock Island Elementary: No Charge

## Information about Meal Pick-up

- Meal pick up is only available to students enrolled at Eastmont School District. Students will need to provide name, student ID number (preferred), and date of birth, or school and grade.
- Meals can be picked up at any site, but only one meal bag per day. Second meal bags will be charged at full price to the student's account. Grades K-12 \$4.25.
- Students do not need to be present. Parents or guardians can pick up meals. Parents will need to provide student name and ID number when picking up meals.
- Meals will only be distributed on school days.
- Meals will be charged to student accounts based on student meal eligibility status.
- Parents are responsible for payment of meals for their students.
- Payments for student / staff meal accounts will only be accepted at the Eastmont Administrative Office. You can make payments in person Monday – Friday 7:30 a.m. – 4:30 pm or mail to 800 Eastmont Ave., East Wenatchee, WA 98802. No cash or checks will be accepted at school sites.
- Alternatively, parents can make secure payments online via MySchoolBucks. In addition, this application will allow parents to view cafeteria purchases, check the balance of their student's meal account, set up low balance alerts and schedule automatic payments. [www.myschoolbucks.com](http://www.myschoolbucks.com)
- Has your family income changed? You may qualify for Free or Reduced price meal benefits. Apply online at: [www.myschoolapps.com](http://www.myschoolapps.com) or [www.eastmont206.org/departments/food-services](http://www.eastmont206.org/departments/food-services)
- None of the pick up times work for my family. Please call the Food Service Office at 884-3026 or email [Food.Service.Office@eastmont206.org](mailto:Food.Service.Office@eastmont206.org). You will be contacted to make alternative arrangements.
- Si usted necesita asistencia en español visite la pagina web [www.eastmont206.org](http://www.eastmont206.org).

This institution is an equal opportunity provider.

## Servicio de Alimentos de Eastmont

### Horario para recoger alimentos

#### A partir del primer día de clases

Escuela primaria Lee - 11:00 am - 12:30 pm

Escuela secundaria Eastmont Jr High - 11:30 am - 1:00 pm & 4:30 pm - 6:00 pm

Escuela intermediaria Clovis - 11:30 am - 1:00 pm

Escuela primaria Rock Island - 11:00 am - 12:30 pm

Todas las bolsas de comida incluirán desayuno y almuerzo.

Precios de las comidas:

Estudiantes que califican para comidas gratis: Sin cargo

Estudiantes de K-3 que califican para precio reducido: Sin cargo

Estudiantes de 4 ° a 12 ° grado que califican para precio reducido: \$ .40

Estudiantes de grados K-12 sin beneficios de comida: \$ 4.25

Todos los estudiantes inscritos en la escuela primaria

Rock Island: sin cargo

## Información para la recoger las comidas

- Las bolsas de comida solo estarán disponible para los estudiantes inscritos en el Distrito Escolar de Eastmont. Los estudiantes deberán proporcionar su nombre, número de identificación de estudiante (preferido) y fecha de nacimiento, o escuela y grado.
- Las comidas se pueden recoger en cualquier lugar, pero solo una bolsa de comida por día. La segunda bolsa de comida se cobrará al precio completo en la cuenta del estudiante. Grados K-12 \$ 4.25.
- Los estudiantes no necesitan estar presentes. Los padres o tutores pueden recoger las comidas. Los padres deberán proporcionar el nombre del estudiante y el número de identificación cuando recojan las comidas.
- Las comidas solo se distribuirán durante los días escolares.
- Las comidas se cobrarán a la cuenta del estudiante según el estado de elegibilidad.
- Los padres son responsables del pago de las comidas de sus estudiantes.
- Los pagos de las cuentas de comidas de los estudiantes o del personal sólo se aceptarán en la Oficina Administrativa de Eastmont. Puede realizar los pagos en persona de lunes a viernes de 7:30 a. M. A 4:30 p. M. O por correo a 800 Eastmont Ave., East Wenatchee, WA 98802. No se aceptarán efectivo ni cheques en las escuelas.
- Los padres también pueden realizar pagos seguros en línea a través de MySchoolBucks. Además, esta aplicación permitirá a los padres ver las compras de la cafetería, verificar el saldo de la cuenta de comidas de su estudiante, configurar alertas de saldo bajo y programar pagos automáticos. [www.myschoolbucks.com](http://www.myschoolbucks.com)
- ¿Han cambiado los ingresos de su familia? Puede calificar para beneficios de comidas gratis o de precio reducido. Solicite en línea en: [www.myschoolapps.com](http://www.myschoolapps.com) o [www.eastmont206.org/departments/food-services](http://www.eastmont206.org/departments/food-services)
- Si ninguno de los horarios para recoger comida funciona para su familia, llame a la Oficina de Servicio de Alimentos al 884-3026 o envíe un correo electrónico a [Food.Service.Office@eastmont206.org](mailto:Food.Service.Office@eastmont206.org). Nosotros lo contactaremos para hacer arreglos alternativos.
- Si usted necesita asistencia en español visite la pagina web [www.eastmont206.org](http://www.eastmont206.org).

Esta institución es un proveedor de igualdad de oportunidades.

# 2020-2021 Annual Notifications

**Title I, Part A - Annual Notification**  
Title I, Part A is a federal program that provides financial support to schools to help disadvantaged and low-performing students so that all children meet challenging state academic standards. Eastmont follows the Schoolwide process giving our seven funded schools flexibility to serve all students who demonstrate a need for support.

**Parent Involvement**  
We know that family involvement in a child's education is a grater predictor of academic success than whether or not that family is affluent or poor. It is also evident that students whose families take an active interest in their school life are more likely to attend school regularly, pass their classes, enroll in higher-level programs, and go on to higher education or a technical career.

**School-Parent Compact**  
The Compact is an annual agreement between the parent, student, and school regarding the joint responsibilities in helping each student find success. These documents are completed each Fall during Parent Conferences. For more information, please visit: [www.eastmont206.org](http://www.eastmont206.org).

**District Parent involvement Policy**  
This policy guides how our district will involve parents in the education of their students. This policy is reviewed each year with parents and updated as needed. If you would like to provide input into the revision of this policy, please contact the Special Programs office and/or be watching for information about a way to get involved. For more information, please visit [www.eastmont206.org](http://www.eastmont206.org).

**Student Academic Achievement Reports**  
Each year, a school that receives Title I, Part A funds must provide parents with an individual student report informing them on their child's level of academic achievement on the State's assessment in at least reading, language arts, and math.

**District and School Report Card - How are we doing?**  
The District and School Report Card provides the following information on public schools and districts in Washington state: student achievement, student demographics, and staff information. For more information, please visit: [reportcard.ospi.k12.wa.us](http://reportcard.ospi.k12.wa.us).

**Parent Right To Know - Highly Qualified Staff**  
Parents of children in schools that receive Title I, Part A funding have the right to request and receive information about the professional qualifications of teachers and instructional paraprofessionals in their building. For more information, please visit: [www.k12.wa.us/TitleI/FamilyInvolvement/default.aspx](http://www.k12.wa.us/TitleI/FamilyInvolvement/default.aspx).

**Have a Complaint that Needs to be Resolved?**  
Any individual or organization may file a signed, written complaint if it believes the state, a local school district, an educational service district, or other sub-grantee has violated one or more requirements of federal statues or regulations or state regulations that apply to a federal program. For more information, please visit: [www.k12.wa.us/TitleI/CitizenComplaint.aspx](http://www.k12.wa.us/TitleI/CitizenComplaint.aspx)



# Students Experience Summer School

By DOMINICK BONNY

While most students will start coursework virtually this 2020-21 school year, some Eastmont third graders at Cascade Elementary School have been able to experience traditional in-person classes during the summer months.

“The kids seem very happy to be here. We have about 45 kids and our attendance has been very regular and very good. I think the social-emotional part (of the experience) has been very, very important for them,” Cascade Principal Kim Browning said.

The students were a part of a special pilot summer school program at Cascade designed to bring the students up to speed in some important academic areas, as well as to gauge the feasibility of what having more students on site in the fall would look like.

Safety measures, including social distancing, mask wearing and daily screenings by parents prior to bus pickup, were taken to ensure the health and safety of students and staff. Outside on the playground, students were allowed to remove their masks, but only if they stayed six feet apart.

Browning said they designated each class a spot on the playground for a certain period of time. Each class stayed with their group in that spot during playtime and then they rotated so the children could experience other parts of the playground.

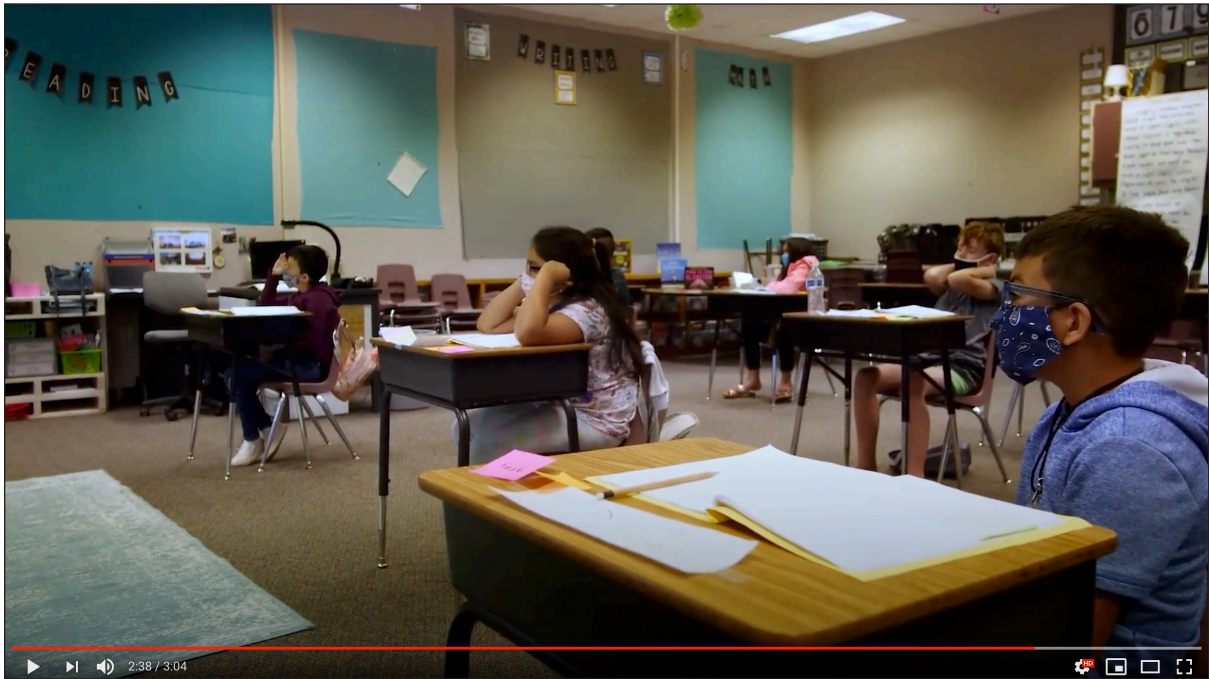
As for adherence to the mask mandate, Browning said the students didn’t seem to be bothered by the fact they were required to wear them.

“The kids have actually seemed to do pretty well with their masks. For the most part I haven’t seen many issues with the kids. Even when we tell them they can take them off outside they usually leave them on.”

To learn more and stay in the loop about what’s happening at Cascade Elementary, follow that school on Facebook.

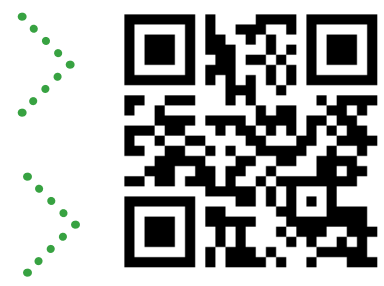


Third-graders attending summer school at Cascade Elementary enjoying the playground.



Since it was a summer program, class sizes were small, which afforded more space for social distancing. Masks or face coverings were also required for all students and staff.

Watch a video recap of the program by scanning the code!



## LOOKING BACK: DO YOU KNOW THESE KENROY STUDENTS FROM 1963-64?



Here’s a fun Throwback Thursday photo that was posted to Kenroy’s Facebook page this summer. It shows Kenroy Elementary School students from 1964. Recognize a familiar face? Let us know if you recognize anyone! Email [social@eastmont206.org](mailto:social@eastmont206.org).



# EASTMONT PARTNERS WITH SERVE WENATCHEE TO MEET COMMUNITY NEEDS

By Mayra Navarro, Migrant/Bilingual District Coordinator

Our team was excited to participate in the local event organized by Serve Wenatchee Valley this month. Families were able to pick up backpacks and clothing at the Town Toyota Center from 9 am to 2 pm. Eastmont shared resources with all of our families and provided answers to the many questions concerning the start of school.

Thank you Serve Wenatchee for the opportunity to partner and contribute for the benefit of our families and community!

Fue con mucho entusiasmo que nuestro equipo participó en el evento organizado por Serve Wenatchee. Las familias tuvieron la oportunidad de recoger mochilas y ropa en el Town Toyota Center de 9-2 P.M. El distrito de Eastmont compartió recursos con todas las familias y proveo respuestas a las tantas preguntas sobre el comienzo del año escolar.

Muchísimas gracias a Serve Wenatchee por la oportunidad de contribuir para el beneficio de nuestras familias y comunidad!

Top picture: Matt Charlton, Lupe Carpio, Teresa Mendoza and Mayra Navarro.



## Moving forward: what you need to know as things change

By now you're probably aware that in these unprecedented times, the situation can change drastically in just a few days or weeks.

In order to provide Eastmont families with the most current information possible, we have built a living document that we are constantly updating with new information as it becomes available. To the right is the first page of the document, and to access the entire thing just scan the code below with your smart device or go to the Eastmont School District Facebook page and get the direct link to the Google Doc, which is pinned to the top of the page.

Please have patience with your student, their teachers, the Eastmont support staff and yourselves as we all work together to provide your children with the best possible educational options that are available to us at any given point in time. We look forward to seeing your students in school like normal very soon!

### EASTMONT SCHOOL DISTRICT ROADMAP FOR REOPENING - Frequently Asked Questions (FAQ) Version - 08-06-20

Please note: This will be updated periodically in response to parent questions, guidance from state and local authorities, and as we seek to best serve our students.

**Selecting a Learning Option:**

- What are the choices for my child(ren)?
  - Two choices
    - Option 1 - phased return to school as soon as possible - remote initially
    - Option 2 - [Eastmont Virtual Academy](#) - long term remote alternative for families, individual/customized plan developed for each student
- How do I sign up for Option 1?
  - You don't have to do anything - your child(ren) will automatically be enrolled at their school
- How do I sign up for Option 2?
  - Click this link [Eastmont Virtual Academy provided by HomeFIELD](#)
- Which teachers will be teaching onsite vs. Eastmont Virtual Academy?
  - Once we know which learning options families want for children we will then assign teachers to duties.
    - Some teachers may request to teach remotely because of pre-existing health conditions so we will attempt to match family choices with staffing requests

**Commitment:**

- If I choose Eastmont Virtual Academy and decide to move my child to the phased return to school option, may I do that at any time?
  - We ask that families commit for the first trimester (12 weeks) and then request a transfer
  - On an individual space available basis we will consider requests prior to the trimester's end but may not be able to accommodate the request due to space/class size restrictions
- If I choose the phased return to school option and decide to move my child to Eastmont Virtual Academy, may I do that at any time?
  - We ask that families commit for the first trimester (12 weeks) and then request a transfer
  - On an individual space available basis we will consider requests prior to the trimester's end but may not be able to accommodate the request due to space/class size restrictions
- Can my child stay in Eastmont Virtual Academy for the entire school year?
  - Yes, the program will be offered for the entire 2020-2021 school year and future school years as well
- If during the hybrid phase parents don't feel comfortable sending their students back at that point could they switch to the virtual academy?

Scan the code with your smart device's camera function, or go to [www.facebook.com/eastmontschools](https://www.facebook.com/eastmontschools) and see the link to the document pinned to the top of the page.

**EASTMONT  
SCHOOL  
DISTRICT**  
*Relationships,  
Relevance, Rigor,  
Results*

- BOARD OF DIRECTORS**  
Dave Piepel, President  
Annette Eggers, Vice President  
Whitney Smith  
Meaghan Vibbert  
Cindy Wright

**ADMINISTRATION OFFICE**  
884-7169  
800 Eastmont, East Wenatchee  
Dr. Garn Christensen, Superintendent  
Cindy Ulrich, Executive Director of Financial Services  
Vicki Trainor, Executive Director of Human Resources  
Spencer Taylor, Executive Director of Elementary Education  
Matt Charlton, Asst. Superintendent/Secondary Education

**EASTMONT HIGH SCHOOL**  
884-6665  
955 NE 3rd Street, East Wenatchee  
Lance Noell, Principal

**EASTMONT JUNIOR HIGH SCHOOL**  
884-2407  
905 NE 8th Street, East Wenatchee  
David Woods, Principal

**STERLING SCHOOL**  
884-7115  
600 N James, East Wenatchee  
Chris Hall, Principal

**CLOVIS POINT INTERMEDIATE SCHOOL**  
888-1400  
1855 SE 4th Street, East Wenatchee  
Amy Dorey, Principal

**CASCADE ELEMENTARY SCHOOL**  
884-0523  
2330 N Baker, East Wenatchee  
Kim Browning, Principal

**GRANT ELEMENTARY SCHOOL**  
884-0557  
1430 SE 1st Street, East Wenatchee  
Kirsten Mittelstaedt, Principal

**KENROY ELEMENTARY SCHOOL**  
884-1443  
601 N. Jonathan, East Wenatchee  
Kristy Daley, Principal

**LEE ELEMENTARY SCHOOL**  
884-1497  
1455 N. Baker, East Wenatchee  
Jamea Connor, Principal

**ROCK ISLAND ELEMENTARY SCHOOL**  
884-5023  
5645 Rock Island Road, Rock Island  
Penny Brown, Principal

**SPECIAL EDUCATION**  
884-7169  
800 Eastmont, East Wenatchee  
Matt Charlton, Director

**SPECIAL PROGRAMS**  
884-7169  
800 Eastmont, East Wenatchee  
Matt Charlton & Spencer Taylor

**FOOD SERVICE**  
884-3026  
800 Eastmont, East Wenatchee  
Suzy Howard, Director

**TECHNOLOGY**  
884-6503  
460 NE 9th Street, East Wenatchee  
Doug Clay, Director

**MAINTENANCE**  
884-6970  
345 6th Street, East Wenatchee  
Seann Tanner, Director

**TRANSPORTATION**  
884-4621  
345 6th Street, East Wenatchee  
Troy Lucas, Director